



INVENTED BY

Michael Taylor
+2102 INFLUENCERS

Tapt was invented by Michael Taylor, a business analyst from Canton, GA.

An energy-conscious dad of three, Michael was constantly following his kids around to make sure they turned off lights, TVs, and ceiling fans. He came up with Tapt so he could manage his household at a glance.

These days, you're likely to find Michael practicing taekwondo, running a Spartan race, or listening to Weird Al Yankovic.

TAPT SMART SWITCH

- Switches can be used to turn standard or smart bulbs on or off
- Programmable features within the Wink app allow switches to dim smart bulbs
- Tapt can trigger other smart products with one touch (e.g., Push one of its buttons when you wake up to open all of your smart blinds, adjust the smart thermostat to a desired temperature, and turn on smart light bulbs)
- Switches allow you to schedule standard bulbs to turn on/off



IN THE BOX

- Wall switch assembly kit with pre-stripped, stranded wires (green, red, white, and black), and 4 wire connectors (for wires up to 12 gauge)
- Faceplate (hides visible screws)
- Snap plate (pre-attached)
- User guide

Note: The included faceplate and snap plate are intended for single gang box installations only. If installing in a double gang box, use a double gang wall plate (not included) without the faceplate and snap plate.

WHAT YOU'LL NEED

- A Wink HUB or ZigBee-enabled, Wink-certified hub (sold separately)
- Apple® or Android™ smart device (tablets and desktops not supported)
- The Wink app downloaded to your mobile device from the iTunes® App Store or Google Play™. If you already have the Wink app installed, please download the latest version to ensure you have the most updated support.
- A Wi-Fi® network connection with a router using WPA-PSK security. WEP security is not supported. Please refer to your router's manual for instructions on converting your router to WPA security.
- Slotted screwdriver and Phillips head screwdriver

IMPORTANT SAFETY INFORMATION

- Read all instructions and warnings prior to using Tapt. Failure to comply with instructions and warnings constitutes improper use of Tapt. Save all instructions.
- Quirky, Inc. not responsible for improper use, which may result in personal injury or product damage.
- Not a toy. Keep away from children.
- **WARNING: RISK OF ELECTRIC SHOCK OR FIRE.** Before installing, servicing, or removing Tapt, TURN OFF POWER AT THE CIRCUIT BREAKER THAT CONTROLS THE SWITCH. After power has been turned off, make sure the light switch you are going to replace with Tapt is powered down before continuing installation. It is recommended to use a circuit tester to make sure the circuit is off. Exercise extreme caution when using devices controlled via Tapt.
- This device is intended for installation and use in accordance with the National Electric Code (NEC) and local regulations in the United States, or the Canadian Electrical Code (CEC) and local regulations in Canada. **If you are unsure or uncomfortable about performing this installation, consult a qualified electrician.**
- Tapt is a single pole switch and a neutral connection is required.
- Tapt is not compatible with a 3-way light switch.
- **NOT FOR USE WITH MEDICAL OR LIFE SUPPORT EQUIPMENT.** App-enabled devices should never be used to supply power to or control the On/Off status of medical and/or life support equipment.
- Do not use to control electric heaters or any other appliances which may present a hazardous condition due to unattended or unintentional or automatic power on control.
- 120VAC. Must not exceed 600 watts (Incandescent); 15 Amps, 1800W (Resistive); or 1/2 HP (Motor). The maximum rating for entire switch is 1800W (15A) Resistive.
- There are no user-serviceable parts.
- Only use this device with copper or copper-clad wires.

COMPLIANCE

This device complies with Part 15 of the FCC Rules. Operation is subject to the following two conditions: (1) this device may not cause harmful interference, and (2) this device must accept any interference received, including interference that may cause undesired operation.

Changes or modifications not expressly approved by the party responsible for compliance could void the user's authority to operate the equipment.

NOTE: This equipment has been tested and found to comply with the limits for a Class B digital device, pursuant to Part 15 of the FCC Rules. These limits are designed to provide reasonable protection against harmful interference in a residential installation. This equipment generates, uses and can radiate radio frequency energy and, if not installed and used in accordance with the instructions, may cause harmful interference to radio communications. However, there is no guarantee that interference will not occur in a particular installation. If this equipment does cause harmful interference to radio or television reception, which can be determined by turning the equipment off and on, the user is encouraged to try to correct the interference by one or more of the following measures:

- Reorient or relocate the receiving antenna.
- Increase the separation between the equipment and receiver.
- Connect the equipment into an outlet on a circuit different from that to which the receiver is connected.
- Consult the dealer or an experienced radio/TV technician for help.

This equipment complies with FCC radiation exposure limits set forth for an uncontrolled environment. This equipment should be installed and operated with minimum distance 20cm between the radiator & your body.

The country code selection is for non-US models only and is not available to all US models. Per FCC regulations, all Wi-Fi products marketed in US must be fixed to US operation channels only.

This device complies with Industry Canada licence-exempt RSS standard(s). Operation is subject to the following two conditions:

- (1) this device may not cause interference, and (2) this device must accept any interference, including interference that may cause undesired operation of the device.

LIMITED ONE-YEAR WARRANTY

Quirky, Inc. ("Quirky") Original Purchase Product Warranty:

Quirky warrants to the original purchaser ("Purchaser") of this Quirky product, for the period of one (1) year following the date on which Purchaser purchases the product, that the product shall be free of defects in design, assembly, material, or workmanship.

Quirky will refund or replace, at its option, any defective product free of charge.

In order to qualify for this warranty, the Purchaser must provide the defective product and a copy of the original receipt of purchase to Quirky for inspection. The receipt of purchase must indicate the product purchased, price paid, date of purchase, and name of merchant.

To request service under this warranty, contact Quirky at 866-5-QUIRKY or questions@quirky.com and a Quirky representative will provide instruction on how to proceed.

This warranty shall be null and void if Quirky determines that the product has been improperly installed, altered or tampered with in any way. This warranty does not protect against normal use, wear and tear, or damage due to abuse.

THIS WARRANTY CONTAINS THE SOLE WARRANTY OF QUIRKY. THERE ARE NO OTHER WARRANTIES, EXPRESSED OR IMPLIED, INCLUDING THE IMPLIED WARRANTY OR CONDITION OF QUALITY, MERCHANTABILITY OR FITNESS FOR A PARTICULAR PURPOSE, AND SUCH IMPLIED WARRANTIES, IF ANY, ARE LIMITED IN DURATION TO THE TERM OF THIS WARRANTY. IN NO EVENT SHALL QUIRKY BE LIABLE FOR INCIDENTAL, SPECIAL, DIRECT, INDIRECT OR CONSEQUENTIAL DAMAGES SUCH AS, BUT NOT LIMITED TO, LOST BUSINESS OR PROFITS ARISING OUT OF THE SALE OR USE OF ANY QUIRKY PRODUCT, EVEN IF ADVISED OF THE POSSIBILITY OF SUCH DAMAGES.

Some jurisdictions do not allow exclusions or limitations on implied warranties or incidental, consequential or other damages, so the above exclusions and limitations may not apply to you.

COPYRIGHT AND TRADEMARK NOTICES

© 2015 Quirky, Inc. All rights reserved.

Quirky is a registered trademark of Quirky, Inc.

Wink is a trademark of Wink, Inc.

GE is a registered trademark of General Electric Company and is under license by Quirky, Inc.

Wi-Fi is a registered trademark of the Wi-Fi Alliance.

ZigBee is a registered trademark of ZigBee Alliance.

Apple and iTunes are registered trademarks of Apple, Inc.

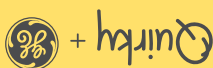
App Store is a service mark of Apple, Inc.

Android and Google Play are trademarks of Google, Inc.

SUPPORT

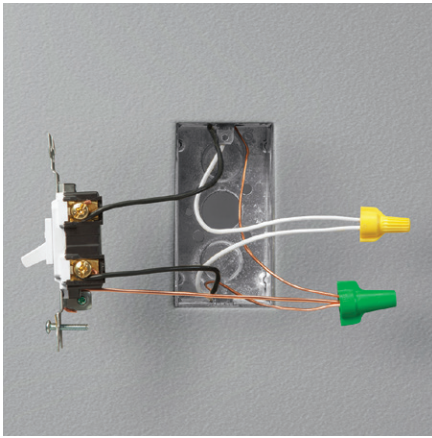
Need help?

Email questions@quirky.com
Call 1-866-5QUIRKY



INSTALLATION INSTRUCTIONS

Tapt should be installed by a qualified electrician and used in accordance with appropriate electrical codes and regulations. This is a single pole switch and neutral connection is required. Not intended for replacement of 3-way switches.



- 1 Turn OFF power at the circuit breaker that controls the light switch. It is recommended to use a circuit tester to make sure the circuit is off.
- 2 Remove existing wall plate and light switch.
- 3 Identify the line, load, ground and neutral wires. IF THERE ARE NO NEUTRAL WIRES, STOP AND CONSULT AN ELECTRICIAN.
- 4 If neutral is present, disconnect the wiring from the existing switch.

- 5 Connect Tapt assembly wiring with included push-in wire connectors. A push-in wire connector works as a 'finger trap' for wires; simply push wires into an available pole to lock. Connect as follows:

GREEN wire on switch to green/bare **GROUND** wire
WHITE wire on switch to white **NEUTRAL** wire
BLACK wire on switch to black **LINE** wire
RED wire on switch to red **LOAD** wire

NOTE: Your home's wiring may differ; please consult an electrician.

- 6 Double-check to confirm wiring is correct.
- 7 Place Tapt assembly into wall and mount using the mounting screws from the existing switch.



- 8 Use the included faceplate or attach your existing wall plate:

To use the included faceplate:

Press the faceplate onto the snap plate.

To use your existing wall plate:

Unscrew the smaller top and bottom screws on the assembly and remove the snap plate. Attach your wall plate only.

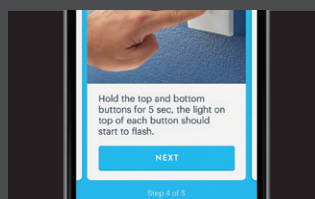
NOTE: The included faceplate and snap plate are intended for single gang box installations only. If installing in a double gang box, use a double gang wall plate (not included) without the faceplate and snap plate.

- 9 Turn on power at the circuit breaker.
- 10 There is a white LED light on the top right of each switch button that will turn on when pressed. Press each button to make sure Tapt is wired correctly.
- 11 If the lights are not working, be sure to turn off power at the circuit breaker before you fix the wiring.

CONNECTING TAPT TO THE WINK APP



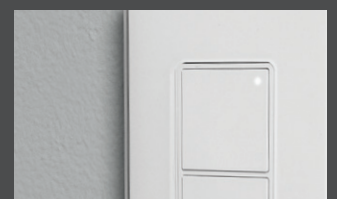
Open the Wink app on your mobile device and log in with your email address and password. If this is your first time using the Wink app, tap Sign Up to create an account.



Follow the steps provided in the Wink app.



The white LED lights on the buttons will blink when pairing. The pairing mode will last 60 seconds. To restart the pairing mode, press and hold both buttons on Tapt at the same time for 5 seconds. The lights will start blinking.



When the Wink app displays "success," your device is connected. The white LED light on the top right of each button will be solid ON when paired, then turn off after a few seconds.